

Viola

Lorenzo Fernández

1º Quarteto

em Fá#m

1. Allegro Moderato
2. Acalanto - Allegro Comodo
3. Largo e Serenamente
4. Allegro Giocoso



Viola

1º Quarteto

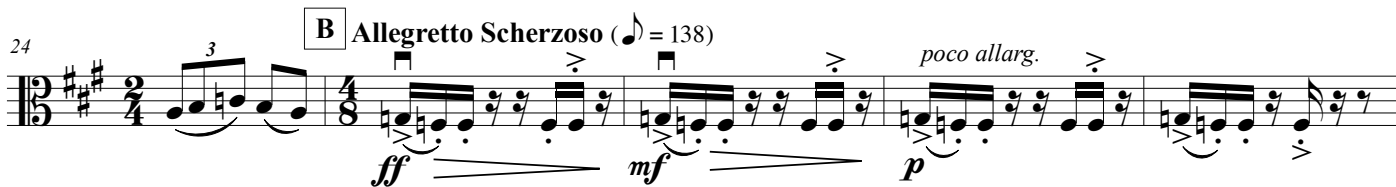
em Fá#m

O. Lorenzo Fernández

Rio de Janeiro, 1927

1. Allegro Moderato

Allegro Moderato (♩ = 116)



60 E $\frac{3}{8}$

Musical staff 60-65 in bass clef, 3/8 time. It features a melodic line with several triplet markings (indicated by a '3' below the notes).

66

Musical staff 66-71 in bass clef, 3/8 time. It continues the melodic line with triplet markings.

72 F **Cantando largamente, con molta espressione**
pizz.
p

Musical staff 72-75 in bass clef, 3/4 time. The tempo and expression markings are 'Cantando largamente, con molta espressione', 'pizz.', and 'p'. The music consists of dotted rhythms.

76

Musical staff 76-80 in bass clef, 3/4 time. It features a series of eighth-note patterns.

81

Musical staff 81-85 in bass clef, 3/4 time. It continues with eighth-note patterns and includes a '3' marking and an 'arco' instruction.

G **Energico**
86 *ff* **Allegretto Scherzoso** *mf* *misterioso* *mf*

Musical staff 86-92 in bass clef, 3/4 time. It starts with a forte dynamic (*ff*) and includes markings for 'Energico', 'Allegretto Scherzoso', and 'misterioso'. There are accents and a triplet marking.

93 *cresc.*

Musical staff 93-97 in bass clef, 3/4 time. It features a crescendo marking and eighth-note patterns.

98 H *pp*

Musical staff 98-102 in bass clef, 3/4 time. It starts with a piano dynamic (*pp*) and features eighth-note patterns.

103 I *cresc. sempre e*

Musical staff 103-108 in bass clef, 3/4 time. It features a 'cresc. sempre e' marking and eighth-note patterns.

109 *animando poco a poco*

Musical staff 109-115 in bass clef, 3/4 time. It features an 'animando poco a poco' marking and eighth-note patterns.

116 J *fff* 8

Musical staff 116-119 in bass clef, 3/4 time. It starts with a fortissimo dynamic (*fff*) and ends with a fermata over an 8-measure rest.

K 130 **L** Vln. II *p* *pp*

143 *pizz. morrendo* *pp*

M 149 *Andante* (♩=♩) *arco* *con sord.* *p*

155 *rit.* *a tempo* *cresc. e animando un poco* **N**

162 *a tempo* *mf* *cresc. e animando un poco*

168

O 172 *precipitando*

176 *senza rit.* *sord.* **P** **Allegretto Scherzoso**

180

185 **Q** **Allegro Moderato ma energico** *in loco*

190 *cresc. e animando poco a poco*

194

R **Molto Allegro**

198

201

più lontano

pizz.

p *pp*

2. Acalanto - Allegro Comodo

Allegretto Comodo

con sord.



A
8

(Un poco più lento e lontano)



B
18

Un poco più mosso



27

C

misterioso

D



35

cresc.

pp



E
43

F

cresc.

dim.



54

G 1º Tempo

sfz

mf



65

H



74

cedez

I

a tempo
(Un poco più mosso)

mf



J

85

K

98

Un poco più lento e lontano

3. Largo e Serenamente

Largo e Serenamente (♩ = 48)

4. Allegro Giocoso

Allegro Giocoso (♩ = 144)

A

10

B

cantando

21

C

allarg. poco a poco

34

D

Allegretto Scherzoso (♩ = 126)

al

dim.

41

E

47

53

F

allarg. e dim.

pp

62

pizz.

G

A tempo (Un poco meno)

cedez

a tempo

72

H

I

81

1º Tempo

arco

J

92 **K** Allegretto (♩ = 112)

102 **L**

110 **M**

118 **N**

124 **O**

133 **P**

141 **Q** 1º Tempo

152 **R**

163 **S** cantando **T**

176 **U** cantando **V**

189 **W** cresc. e animando sempre poco a poco

199 **X**

